

Clariden Leu (Lux) Energy Equity Fund H EUR

June 30, 2011

This sector-based equity fund invests globally in oil and gas companies active in the exploration, refining and trading of these commodities as well as the supply of equipment to companies in these fields. The fund is fully hedged in EUR. The fund's investment objective is the greatest possible capital growth.

Key Information

| | |
|-------------------------|-------------------------------|
| NAV (30.06.11) | EUR 104.73 |
| Fund Size (in m) | EUR 482.1 (all share classes) |
| Valor | 2388503 |
| ISIN | LU0240068089 |
| WKN | A0JDY3 |
| Bloomberg | CLAEFFH LX |
| Launch Date | 28.02.2006 |
| Benchmark | no comparable benchmark |
| Investment Manager | Wellington Management, Boston |
| Listing | LUX |
| Fund Type | Luxembourg SICAV (UCITS) |
| ESD Tax Status | no EU taxation |
| Registration | LUX, CH, DE, ES, AT, FR, IT |
| Dealing | daily until 15:00 CET |
| Close of Financial Year | December 31 |
| Distribution | none, accumulation |
| Management Fee | 2.0% p.a. |
| TER (31.12.10) | 2.22% p.a. |
| PTR (31.12.10) | 78.8% p.a. |

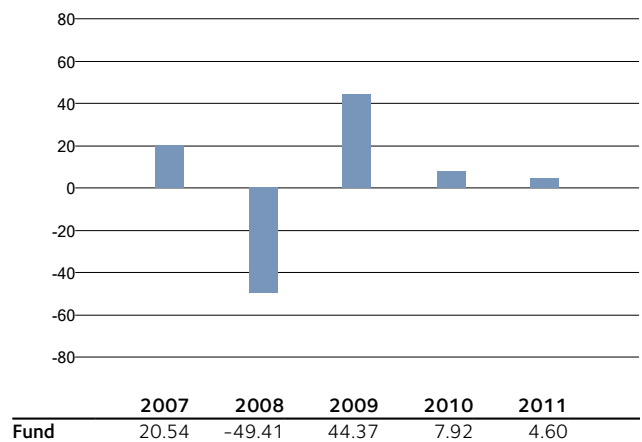
Major Holdings in %

| Name | Fund |
|---------------------|-------------|
| BP Sp ADR | 4.7 |
| Petroleo Sp ADR Pfd | 3.9 |
| Occid.Petrol Corp | 3.5 |
| Cdn Natural Res | 3.4 |
| Ryl Dutch Sp ADR-B | 2.9 |
| Eni Sp ADR | 2.6 |
| Gazprom Sp ADR | 2.3 |
| Whiting Petroleum | 2.2 |
| BG Group | 2.2 |
| Lukoil Sp ADR | 2.2 |
| Total | 29.9 |

Industry Breakdown in %

| Industry | Fund |
|------------------------------------|--------------|
| Integrated Oil & Gas | 39.0 |
| Oil & Gas Exploration & Production | 33.8 |
| Diversified Metals & Mining | 6.5 |
| Oil & Gas Equipment & Services | 4.2 |
| Oil & Gas Refining & Marketing | 4.0 |
| Others | 9.6 |
| Cash | 2.9 |
| Total | 100.0 |

Performance in %



Characteristics

| Measure | Fund |
|-----------------------|--------|
| Return 3 Years (p.a.) | -9.4% |
| Return 5 Years (p.a.) | 0.6% |
| Volatility (p.a.) | 26.1% |
| Best Month | 16.4% |
| Worst Month | -23.3% |
| Maximum Drawdown | -57.1% |
| Positive Months | 60.0% |
| Sharpe Ratio (p.a.) | - |
| Number of Positions | 79 |

Source: Lipper

Country

| Country Breakdown in % | Fund |
|------------------------|--------------|
| United States | 38.7 |
| Canada | 13.5 |
| Great Britain | 9.4 |
| Russia | 4.5 |
| France | 4.0 |
| Others | 27.0 |
| Cash | 2.9 |
| Total | 100.0 |

Clariden Leu Ltd. – Investment Funds, Tel +41 844 844 001, funds@claridenleu.com, www.claridenleu.com/funds

This document is for information purposes only and does not constitute an offer or a recommendation to buy the fund mentioned. While ClaridenLeu Ltd. uses reasonable efforts to obtain information from sources which it believes to be reliable, ClaridenLeu Ltd. makes no representation or warranty as to the accuracy, reliability or completeness of the information. Unless otherwise stated, all figures are unaudited. Information contained herein does explicitly not address investors whose nationality or domicile exclude access to such information based on local law. Each investment in this product bears risks, such as value and profit fluctuations. Investments in foreign currencies may be subject to currency exchange rates. Past performance is no guarantee for current and future results. The performance data do not factor in the commissions and charges levied on the issue and redemption of units. The performance is calculated on a net asset value basis, with income reinvested. The Total Expense Ratio (TER) is the sum of all commissions and costs charged on an ongoing basis to the average fund assets (operating expenses). The value (ex ante) is expressed as a percentage of the fund's assets and projects the average of the next twelve months under the same preconditions. ClaridenLeu Ltd. may receive or pay one-time or recurring remunerations which can affect the performance of the investment. Moreover, there may be adverse interests to those of the holders of this investment product. Further information may be obtained upon request. Fund Management Company of the funds under Swiss law is Swiss Investment Company, Zurich with ClaridenLeu Ltd., Zurich as Custodian Bank. Paying Agent and General Sales Representative of the foreign funds admitted for public sale in Switzerland is likewise ClaridenLeu Ltd., Zurich. Basis for subscriptions are the current prospectus or the current simplified prospectus and latest annual report or semi-annual report, if more recent. The relevant fund documentation (such as Prospectuses, fund regulations, Articles of association, Trust Agreements or Simplified Prospectuses as well as annual and semi-annual reports) may be obtained free of charge at the offices of ClaridenLeu Ltd., Bahnhofstrasse 32, Postfach, CH-8070 Zurich as well as for Swiss funds from Swiss Investment Company, Postfach, CH-8070 Zurich or on the Internet under www.claridenleu.com. In any case, neither this document nor any copy thereof may be sent to or taken into or distributed in the United States or Japan or to any U.S. person. ClaridenLeu Ltd. is a Swiss Bank.

Singapore: This document may be distributed only (i) to persons who are "institutional investors" under section 304 of the Securities and Futures Act, Chapter 289 of Singapore (the "SFA"), or (ii) to persons who are "relevant persons" under section 305(1) of the SFA or persons pursuant to section 305(2) of the SFA if (and only if) this document forms part of the prospectus or information memorandum for the Fund, and such distribution is otherwise in accordance with the conditions specified in section 305 of the SFA.

Hong Kong: This document may be distributed only to persons who are "professional investors" as defined in the Securities and Futures Ordinance (Cap. 571 of the Laws of Hong Kong) and any rules made thereunder. Neither this document nor any Fund described herein has been reviewed by any regulatory authority in Hong Kong. If you are in any doubt about any of the contents of this document, you should obtain independent professional advice.

Germany: The intention to publicly distribute units in this fund in Germany has been notified to the German Federal Financial Supervisory Authority (Bundesanstalt für Finanzdienstleistungsaufsicht - "BaFin") in accordance with the provisions of the German Investment Act (Investmentgesetz - "InvG") and Clariden Leu Ltd. has the right to publicly distribute the units in Germany. This document does not constitute investment advice and is not to be relied upon in substitution for the exercise of independent judgment. It must be read in conjunction with the obligatory investor disclosures. Investors are responsible for making their own assessment of the merits and risks of investing in the units in this fund. Investors should consult with their own financial, tax, legal and other advisors as needed to assist them in making their investment decision.